



Automated supply chain data entry

Automate the reading of documents and emails to create intelligent workflows in your management systems: data sharing and automatic data entry

Mattia Nanetti, Co-founder
mattia@wenda-it.com

Problem

80%

daily time spent in
copy, paste, share
operations data

1.5 T\$

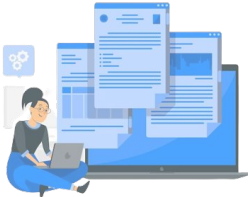
global business losses



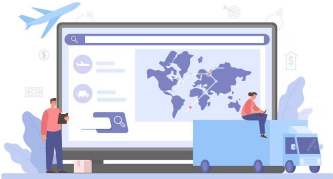
Solution?

60%

time saved!



**Docs/text
to structured
API**



**Logistics
data set &
workflows**



**AI, ML
scalable
learning**

Easy to use, fully integrated product

Any input channel

Pre-processing, AI/ML,
post processing

Fully integrated output



Scanner



Attachments
pdf, jpeg, xml



E-mail



FTP, API

ACTIVE DOCUMENTS

Service order | All | Email | File | Upload document | Search here...

Recap	Producer	Detected	Reviewed				
Pending 2							
Last 24h 0							
Last week 0	Company S.p.A.	30/3/2023	Transport srl Maria	28/2/2023	133%	0%	
Last month 2							
Origin	Company S.r.l.	30/3/2023	Rossi S.p.A Giacomo Fabbri	Camion A45 Pallet - 2500kg	28/2/2023	132%	0%
Email							
File							

ACTIVE DOCUMENTS

Service order | Document detail | Search here...

Progress: 133%

Details: cf_prodotto: 2440480, ref_commerciale: commerciale, email_prodotto: [innocent...].it



Platform



File, EDI,
xml, json



ERP, WMS,
TMS



API, FTP

KUEHNE+NAGEL

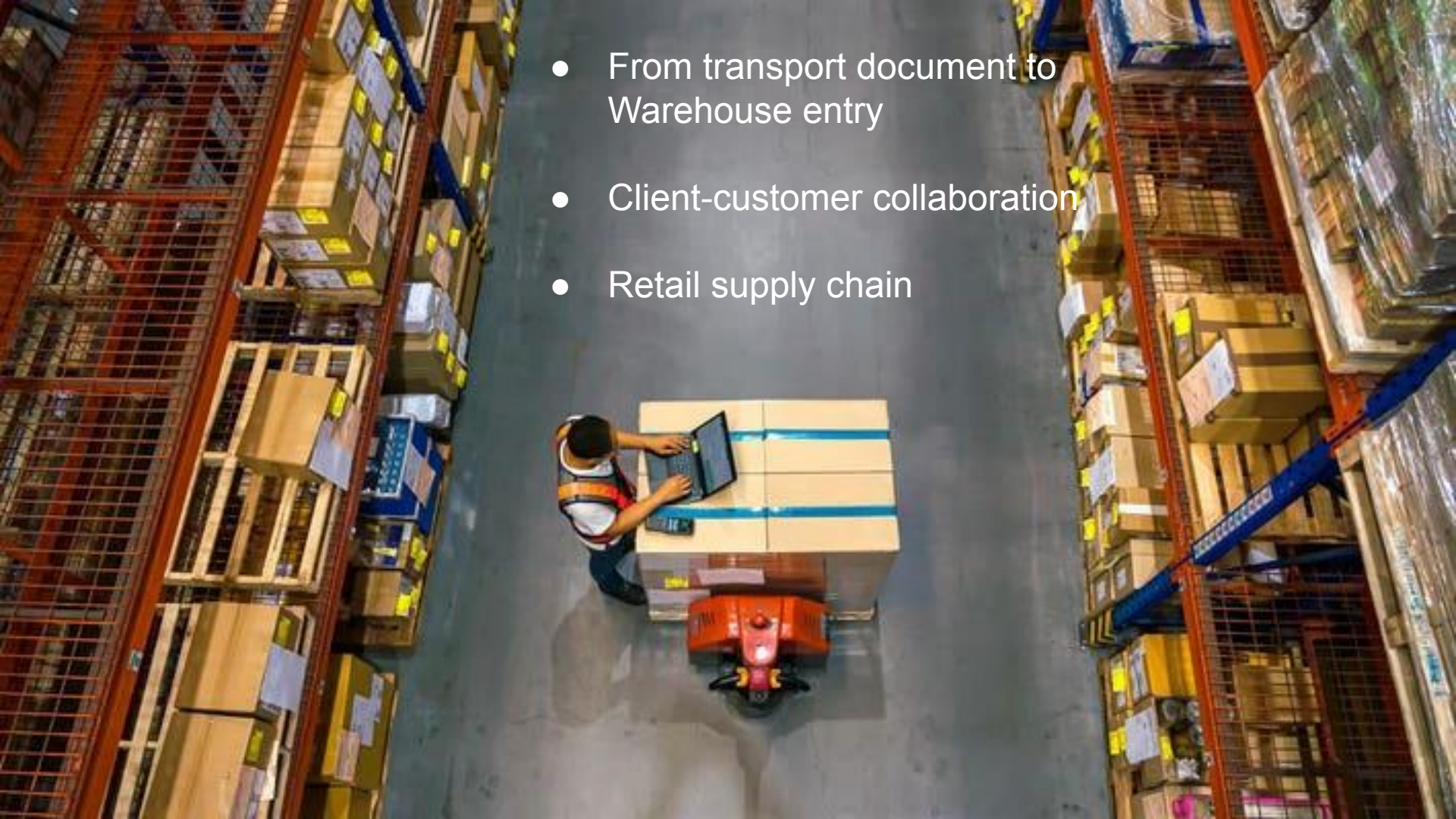


- From paper scanner to data in ERP
- Manufacturing operations
- 60% time saving in 8 warehouses

- From email request to transport
- Multi-branch operations
- Automated customer service



- From transport document to Warehouse entry
- Client-customer collaboration
- Retail supply chain





- From email request to quotation
- ERP integration
- International maritime industry

DH

CAUTION: EXTERNAL email

Hi

Good morning

Hope this email find s you well.

Need a shipping quote for the below shipment size

1 PALETTE 120X80X160 250KG

2 PALETTE 200X80X120 350KG

from

MP Off Road Service, Zofianka Górna 9 23-300 Janow Lubels

Hi Good morning Hope this email find s you well. Need a shipping quote for the below

shipment size 1 quantity PALETTE package_type 120X80X160 measures 250KG weight

2 quantity PALETTE package_type 200X80X120 measures 350KG weight from MP Off Road

Service, Zofianka Górna 9 23- pickup_location 300 pickup_cap Janow

Lubelski pickup_location Poland pickup_state Delivery to Hilltop garage Haz

Zebbug delivery_port Malta Darren Dalli Hilltop Garage Triq Gharram Haz-

Zebbug delivery_port - ZBG 2851 Malta - Europe VAT No. 1688 2311 M: +356 9987 3827

Business model

Powerful saas business model with high margins and high LTV driven by product stickiness



SaaS platform



Network effect



Fast CAC payback



Strong lock-in

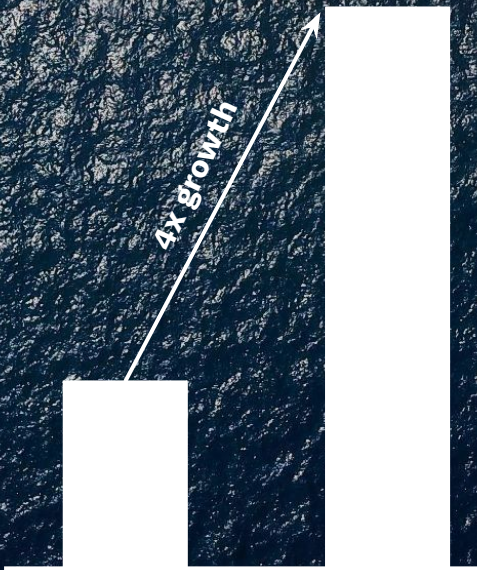


3 y. avg contract



Upselling

Market



\$76B

global market value in 2030,
AI for docs & text grows at a 36% CAGR
SME=50% of the size. Fastest growing segment



**High digital
investments**



**Increasing
M&A**



**Time
is now!**

Logistics market structure and target



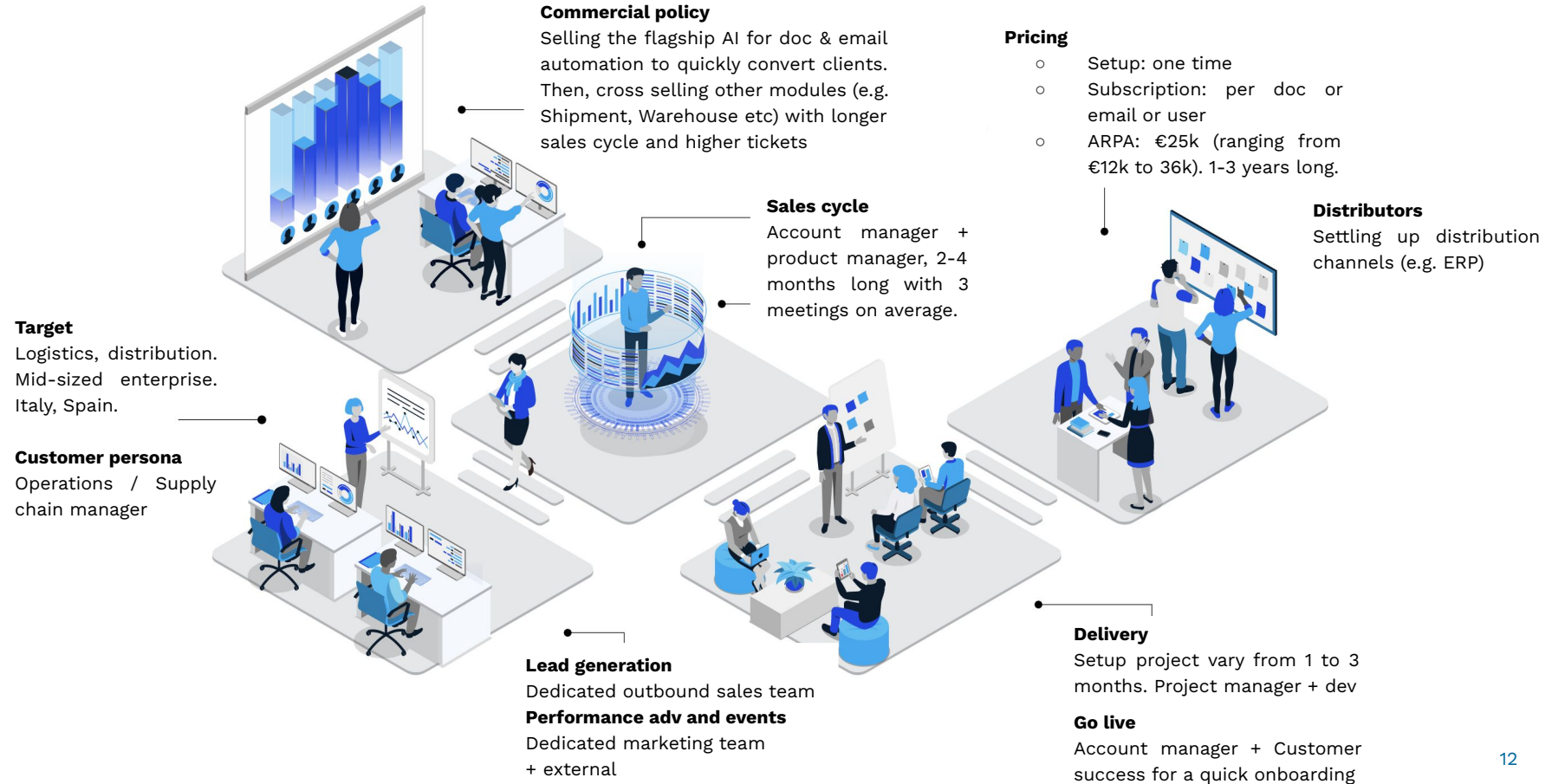
Italy only counts
many target clients

4.000
logistics operators

2.000
freight forwarders


128
Ports (air, sea, dry)

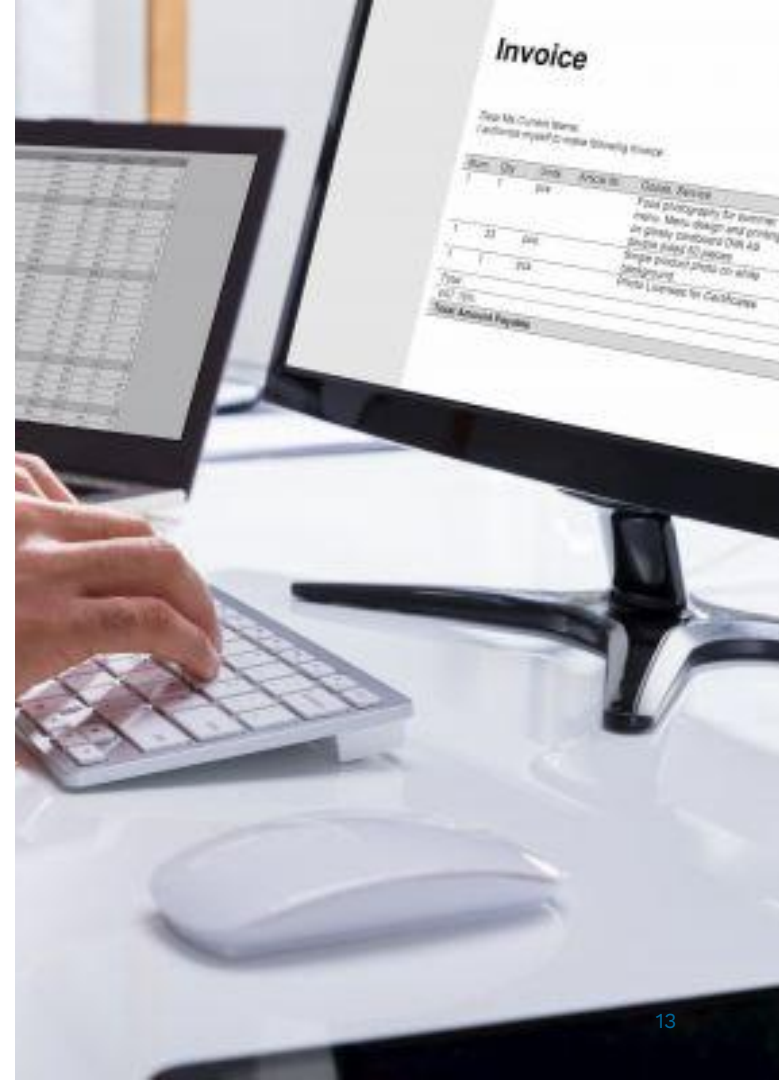
4.9M²
Warehouses



Competitors

Targeting Mid-market with a unique mix of AI and a multi-enterprise architecture

	 wenda	OCR	RPA
Document & email extraction	✓	✗	✗
Self learning	✓	✗	✗
Scalability across templates	✓	✗	✗
Workflows	✓	✗	✗
Multi-enterprise platform	✓	✗	✗



Executive Team



Antonio Catapano
Co-founder, CEO/CTO

MBA, Entrepreneur
Supply chain
System Integration



Mattia Nanetti
Co-founder, COO/CMO

Food, Innovation
Marketing & Sales
Lean startups

Team: + 20 people

Advisors



Daniele Testi
Marketing, logistics



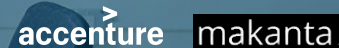
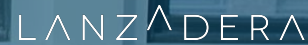
Gianluca Lisci
Pharma industry



Daniel Dancausa
Startup acceleration, AI Tech



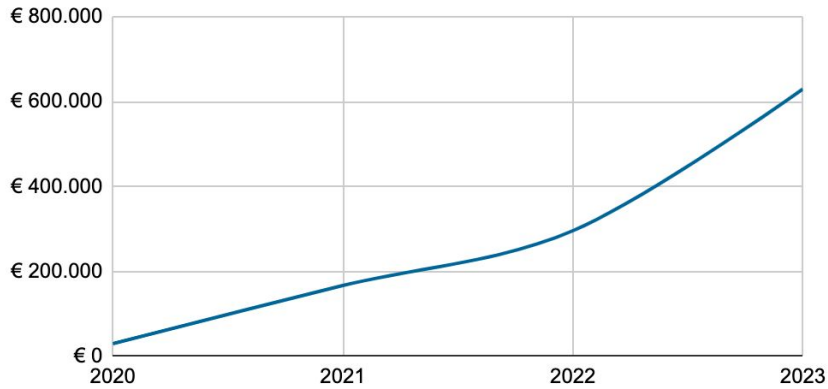
Investors & Accelerators



Financials

- x5 ARR growth
- €1.5M raised
- EU focus

Revenue growth



KUEHNE+NAGEL

ESSELUNGA

FOODY
SISTEMI AEROMARINERARI BALNO

CEF
LA CONSULENZA DEL CREDITORE

DARIO PERIOLI GROUP

SINERGY/CARGO

DHL

RHENUS LOGISTICS

Francesco Parisi
Casa di Spedizioni S.p.A.

ALLWAYS LOGISTIC

babaco market





2019-2022

⇒ 1.5 million in funding

⇒ €700k revenues

⇒ 20 clients & 20 FTE

2023

- Round for AI

- AI deployed on 10 clients

- 30 total clients, Italy, Spain

2024

- WMS integration

- €1.2M revenues in Italy, Spain

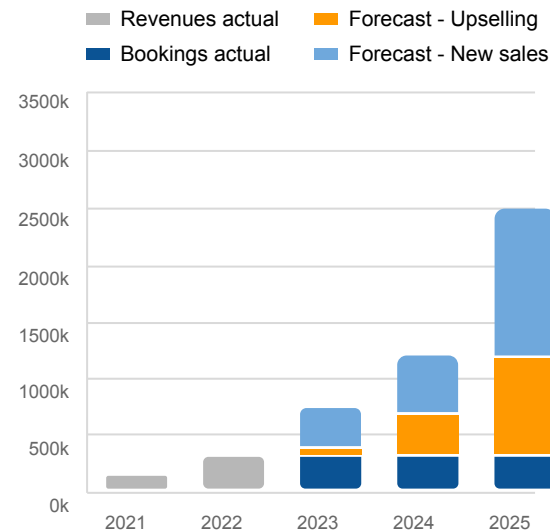
- Spanish local team settled

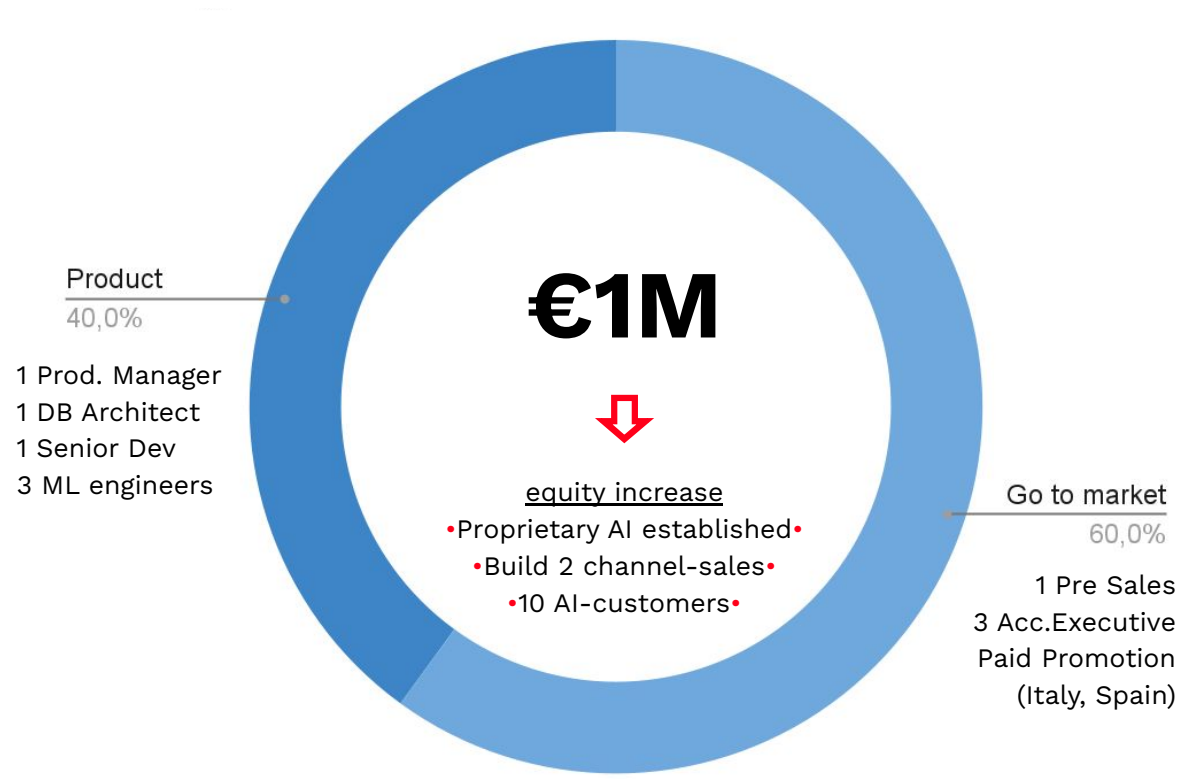
2025

- Series A

- €2.5M revenues in Italy, Spain

- Start EU intl





Product
40,0%

- 1 Prod. Manager
- 1 DB Architect
- 1 Senior Dev
- 3 ML engineers

€1M



equity increase

- Proprietary AI established •
- Build 2 channel-sales •
- 10 AI-customers •

Go to market
60,0%

- 1 Pre Sales
- 3 Acc.Executive
- Paid Promotion (Italy, Spain)



Mattia Nanetti, Co-founder
mattia@wenda-it.com

info@wenda-it.com | www.wenda-it.com



Discover more!